

SILVER BELL ESTATES NO. 1

PART OF SEC. 32, T.7N., R.1E., S.L.B.&M.

IN WEBER COUNTY, UTAH
EDEN DISTRICT

TAXING UNIT 28

PREFIX 22-034

LOTS 22-27, 41-44

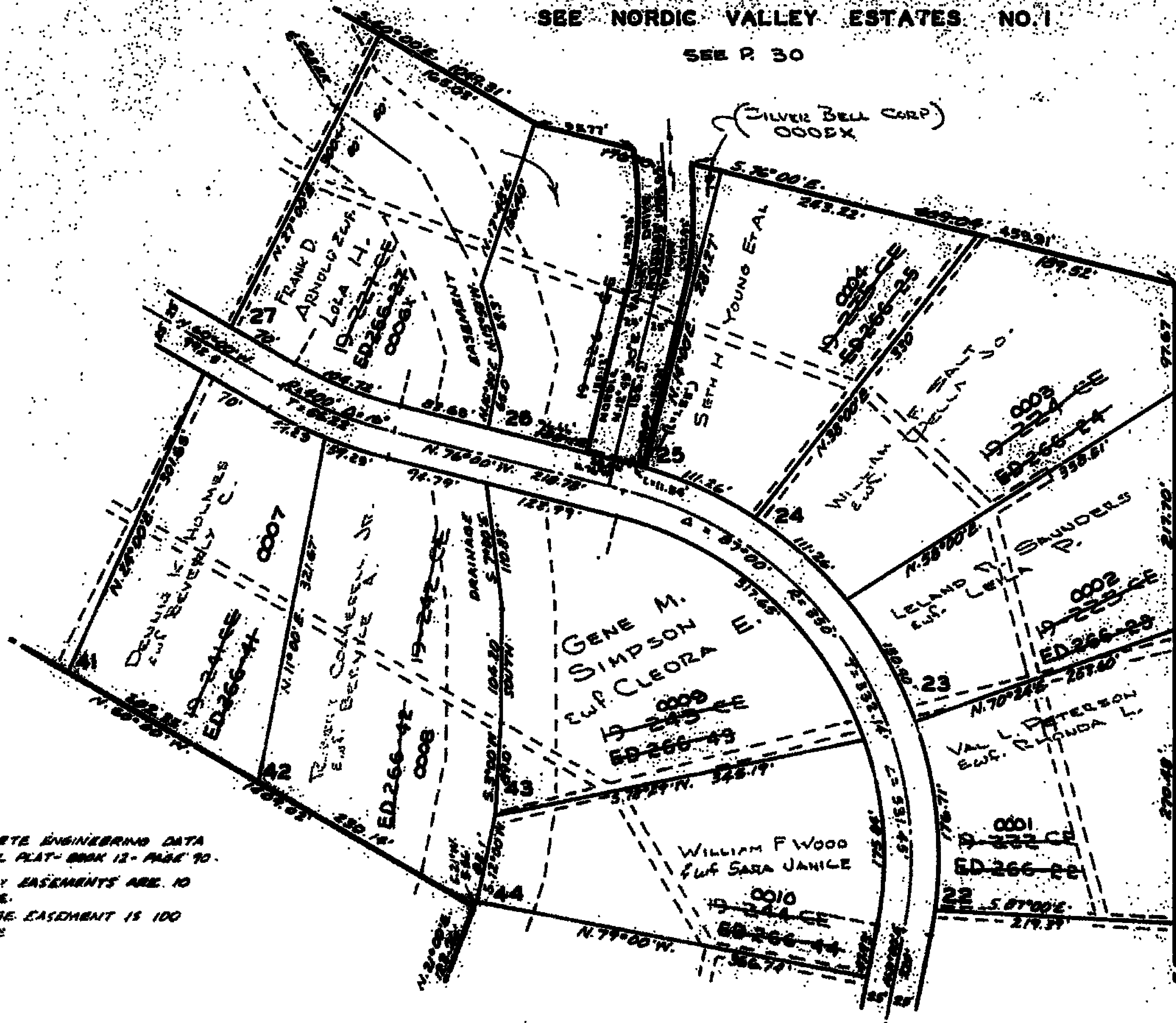
SCALE 1" = 100'

EDEN CEMETERY
MAINTENANCE DISTRICT

EXCEPT WHERE OTHERWISE SHOWN,
ALL LOTS ARE OWNED BY
SILVER BELL CORPORATION

SEE NORDIC VALLEY ESTATES NO. 1

SEE P. 30



NOTE:
FOR COMPLETE ENGINEERING DATA
SEE ORIGINAL PLAT-BOOK 12-PAGE 70.
ALL UTILITY EASEMENTS ARE 10
FEET WIDE.
THE DRAINAGE EASEMENT IS 100
FEET WIDE